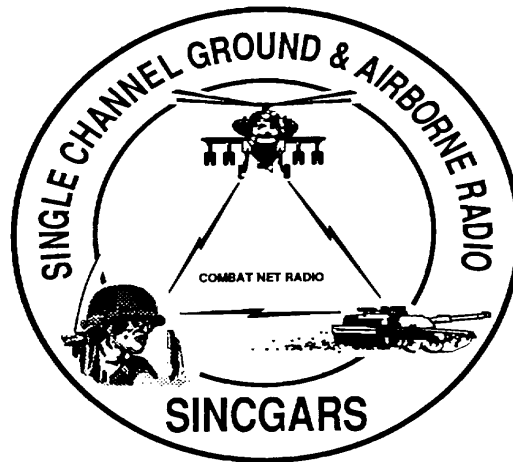


---

TECHNICAL BULLETIN



**INSTALLATION INSTRUCTIONS FOR  
INSTALLATION KIT  
ELECTRONIC EQUIPMENT MK-2381/VRC  
(NSN 5895-01-311-3005) (EIC: N/A)  
TO PERMIT INSTALLATION OF RADIO SETS  
AN/VRC-87/88/90 SERIES  
IN A  
REPEATER SET RADIO, AN/TRC-138 OR AN/TRC-138A**

Approved for public release; distribution is unlimited.

---

**HEADQUARTERS, DEPARTMENT OF THE ARMY**

1 SEPTEMBER 1993

**INSTALLATION INSTRUCTIONS FOR  
 INSTALLATION KIT  
 ELECTRONIC EQUIPMENT MK-2381NRC  
 (NSN 5895-01-311-3005) (EIC: N/A)  
 TO PERMIT INSTALLATION OF RADIO SETS  
 ANNRC-87/88/90 SERIES  
 IN A  
 REPEATER SET RADIO, AN/TRC-138 OR AN/TRC-138A**

**REPORTING OF ERRORS AND RECOMMENDING IMPROVEMENTS**

You can help improve this manual. If you find any mistakes or if you know of a way to improve the procedures, please let us know. Mail your letter, DA Form 2028 (Recommended Changes to Publications and Blank Forms), or DA Form 2028-2 located in the back of this manual direct to: Commander, US Army Communications- Electronics Command and Fort Monmouth, ATTN: AMSEL-LC-LM-LT, Fort Monmouth, New Jersey 07703-5007. In either case a reply will be furnished direct to you.

**TABLE OF CONTENTS**

Subject	Section	Page
Scope .....	0.1	1
General Information .....	0.2	1
Maintenance Forms, Records, and Reports .....	0.3	1
Reports of Maintenance and Unsatisfactory Equipment .....	0.3.1	1
Report of Packing and Handling Deficiencies .....	0.3.2	1
Discrepancy in Transportation Deficiency Report (TDR) (SF 361) .....	0.3.3	1
Consolidated Index of Army Publications .....	0.4	1
Purpose of Installation .....	1.	2
End Item or System to be Modified .....	2.	2
Application Times .....	3.	2
Time for Completion of Installation .....	3.1	2
Time for Installation of One Assembly or Component .....	3.2	2
Preparation for Installation .....	4.	2
Preparation of Shelter .....	4.1	2
Preparation of MK .....	4.2	2
MK, Distribution, and Consumables .....	4.3	3
Tools and Test, Measurement, and Diagnostic Equipment (TMDE) Required .....	4.4	7
Installation Procedures .....	5.	8
Installation of Antenna, Vehicular, AS-3900NRC .....	5.1	12
Installation of Mounting Base, Electrical Equipment MT-6352NRC .....	5.2	16
Installation of Loudspeaker, Permanent Magnet LS-454/U (speaker) .....	5.3	18
Installation of Cables .....	5.4	19
Installation of MK-2499NRC .....	5.5	22
Post-Installation and Checkout .....	5.6	22
Appendix A References .....		A-1

LIST OF ILLUSTRATIONS

Figure	Title	Page
4-1	MK Illustrated Parts List .....	5
4-2	TSEC/KY-57 Illustrated Parts List .....	6
5-1(1)	MK and Radio Installation: MK Equipment Locations, AN/TRC-138.....	8
5-1(2)	MK and Radio Installation: Radio Equipment Locations, AN/TRC-138 .....	9
5-1(3)	MK and Radio Installation: MK Equipment Locations, ANfTRC-138A .....	10
5-1(4)	MK and Radio Installation: Radio Equipment Locations, AN/TRC-138A .....	11
5-2(1)	Antenna Base Installation .....	12
5-2(2)	Ground Lead Installation: AN/TRC-138 .....	14
5-2(3)	Ground Lead Installation: AN/TRC-138A .....	14
5-2(4)	Top Antenna Assembly Installation .....	15
5-3	Mounting Base Installation .....	17
5-4(1)	Speaker Installation - A .....	18
5-4(2)	Speaker Installation - B .....	18
5-5(1)	Installation of Cables: AN/TRC-138 .....	20
5-5(2)	Installation of Cables: AN/TRC-138A .....	21
5-6(1)	Cable Diagram: For ANNRC-87A/88A/90A .....	23
5-6(2)	Cable Diagram: For ANNRC-87/88/90 .....	24

LIST OF TABLES

Figure	Title	Page
4-1	Parts List for Installation of Radio Set ANNRC-87/88/90 Series.....	4
4-2	Additional Items Required for Installation when using RT-1439NRC .....	6

## 0.1 SCOPE.

This technical bulletin provides installation instructions for Installation Kit, Electronic Equipment MK-2381NRC, commonly referred to as the Mounting Kit (MK). The MK shall be installed into the following type of shelter(s):

- Repeater Set Radio AN/TRC-138 or AN/TRC-138A

The MK is used for installation of radio set components at field locations. The information contained in this technical bulletin is the official authorization to perform the installation at the unit maintenance level.

### NOTES

- This technical bulletin is not an authorization for requisition or turn-in of shelters.
- This technical bulletin does not establish quantity or types of shelters assigned to using units.

This technical bulletin does not contain information on the maintenance or replacement of the MKs. This information is contained in the MAC of TM 11-5820-890-20-2, TM 11-5820-890-20-4 and RPSTL of TM 11-5820-890-20P.

## 0.2 GENERAL INFORMATION.

The MK becomes operable when all the radio set components are installed in the shelter and correct power is supplied. Refer to TM 11-5820-890-20-1 or TM 11-5820-890-20-4 for installation, Operational (OP) Check instructions, and required maintenance procedures. Refer to TM 11-5820-890-20P for repair parts.

Included in the radio set AN/VRC-87/88/90 Series are:

- Radio Set ANNRC-87/88/90 (for RT-1439NRC)
- Radio Set ANNRC-87A/88A/90A (for RT-1523(C)/U)

## 0.3 MAINTENANCE FORMS, RECORDS, AND REPORTS.

**0.3.1 Reports of Maintenance and Unsatisfactory Equipment. See Section 4.2.2.3 for information.**

**0.3.2 Report of Packing and Handling Deficiencies. See Section 4.2.2.1 for information.**

**0.3.3 Discrepancy In Transportation Deficiency Report (TDR) (SF361). See Section 4.2.2.2 for information.**

## 0.4 CONSOLIDATED INDEX OF ARMY PUBLICATIONS.

Refer to the latest issue of DA Pam 25-30 to determine whether there are new changes, or additional publications pertaining to the equipment.

**1. PURPOSE OF INSTALLATION.**

The Installation Kit Electronic Equipment MK-2381NRC (MK) contains the items needed to mount Radio Set ANNRC-87A/88A/90A in a Radio Repeater Set, AN/TRC-138 or AN/TRC-138A. If Radio Set ANNRC-87/88/90 is to be installed, communications security equipment (TSEC/KY-57) will also need to be installed. See Section 5.5 for information.

**2. END ITEM OR SYSTEM TO BE MODIFIED.**

Not applicable.

**3. APPLICATION TIMES.**

**3.1 Time for Completion of Installation.** Using two people, a total of 2.5 work hours is required. Typical shelter downtime is 2.5 hours.

**3.2 Time for Installation of One Assembly or Component.** The following table lists the time required to install one component. All times have been rounded off to the nearest half hour. The sum of these items will not reflect the typical shelter downtime.

ITEM	SECTION	TIME
Antenna AS-3900NRC	5.1	0.5
Mounting Base, Electrical Equipment MT-6352NRC	5.2	0.5
Loudspeaker, Permanent Magnet, LS-454/U	5.3	0.5
Cables	5.4	1.0

**4. PREPARATION FOR INSTALLATION.**

This section explains how to prepare the shelter and MK for installation.

**4.1 Preparation of Shelter.** To prepare the shelter for installation, insure that the site includes adequate lighting and a power source when drilling is required. Inspect the shelter for damage that could affect installation. Have any such damage repaired before installing MK.

**4.1.1 Items to be Removed.** Remove existing ANNRC-12 radio family installation kit/harness. See TM 11-5820401-20-2 for removing items used with intercom systems, or TM 11-5820-401-20-1 (used without intercom systems), and TM 9-2320-289-20.

**4.1.2 Items to be Retained.** Not applicable.

**4.2 Preparation of MK.** To prepare MK, unpack, inspect and check inventory.

**4.2.1 Precautions During Handling.** Observe these steps to prevent equipment damage.

- a. Keep dust cover in place on connectors.
- b. Do not disassemble or modify parts in MK unless authorized to do so.
- c. Keep mounting hardware covered and protected until needed.
- d. When exposed to moisture, rain or salt water, keep all parts dry to prevent corrosion.

**4.2.2 Unpack and Inspect Equipment.**

**4.2.2.1 Inspect Packaging for Evidence of Damage.** Any shipping damage should be reported on SF364 Report of Discrepancy (ROD) as prescribed in AR 735-11-2/DLAR 4140.55/NAVMATINST 4355.73A/AFR 400-64/MCO 4430.3F.

**4.2.2.2 Unpack and Inventory MK.** If any item is missing, fill out and forward Transportation Deficiency Report (TDR) (SF361) as described in AR 55-38/NAVSUPINST 4610.33C/AFR 75-18/MCO P4610.19D/DLAR 4500.15.

**4.2.2.3 Examine Each Item for Damage.** If any item is damaged, fill out and forward SF364 Report of Discrepancy (ROD) as prescribed in AR 735-11-2/DLAR 4140.55/NAVMATINST 4355.73A/AFR-400-64/MCO 4430.3F. All damages should be reported as prescribed in DA Pam 738-750, as contained in Maintenance Management Update.

**4.3 MK, Distribution and Consumables.**

**4.3.1 Items Supplied In MK and/or Required for Installation.** Use Table 4-1 and Figure 4-1 to identify and inventory MK parts.

**4.3.2 Distribution and Issue Instructions.**

- a. US Forces: Do not requisition MK. They will be shipped automatically.
- b. US Army Depots: Requisition MK through supply channels.
- c. Multiservice: Instructions shall be included for multiservice modifications.
- d. MAP/MAS Countries: Instructions shall be provided for MAP/MAS countries.

Table 4-1. Parts List for Installation of Radio Set ANNRC-87/88/90 Series

NSN	ITEM DESCRIPTION AND PART NUMBER	QUANTITY IN MK	SMR CODE	FIGURE ITEM NO.
5985-01-297-2971	Antenna, Vehicular AS-3900NRC (A3017899-1)	1	PAOOF A	4-1, 2
5305-00-847-1159	Screw, Cap, Hexagon (3/8-16 x 1 3/4 in) MS35307-365	4	PAOZZA	
5310-00-913-8881	Nut, Hexagon (3/8-16 in) MS51971-3	4	PAOZZA	4-1, 1
5310-00-061-1258	Washer, Lock, Internal /External Toothed (3/8 in) MS45904-76	8	PAOZZA	
5310-00-889-2527	Washer, Lock, Internal /External-Toothed (5/16 in) MS45904-72	1	PAOZZA	
5306-00-225-9086	Bolt, Machine (5/16-24 x 5/8 in) MS90726-31	1	PAOZZA	
5330-01-205-2864	Gasket (A3013655-1)	1	PAOZZA	
5975-01-188-8873	Mounting Base, Electrical Equipment MT-6352NRC (A3013367-1)	1	PAOOF A	
5306-00-225-9089	Bolt, Machine (5/16-24 x 1 in) MS90726-34	5	PAOZZA	
5310-00-889-2527	Washer Lock, Internal /External Toothed (5/16 in) MS45904-72	10	PAOZZA	
5310-00-880-7746	Nut, Hexagon (5/16-24 in) MS51968-5	5	PAOZZA	
5965-00-043-3463	Handset, H-250/U	1	PAOZZA	
5965-00-876-2375	Loudspeaker, Permanent Magnet LS-454/U	1	PAOZZA	4-1, 3
5995-01-301-0834	Lead, Electrical A3013552-3	1	PAOZZA	4-1, 6
	Cable Assembly, Radio Frequency, CG-3855NRC (20 FT, 0 IN) A3014031-13	1	PAOZZA	
4020-01-341-8795	Fiber Rope Assembly A3167672-1	1	PAOZZA	4-1, 5
5975-00-111-3208	Strap, Tiedown, Electrical Components MS3367-5-9	10	PAOZZA	
5310-00-880-7746	Nut, Hexagon (5/16-24 in) MS51968-5	1	PAOZZA	
	<b>4</b>			

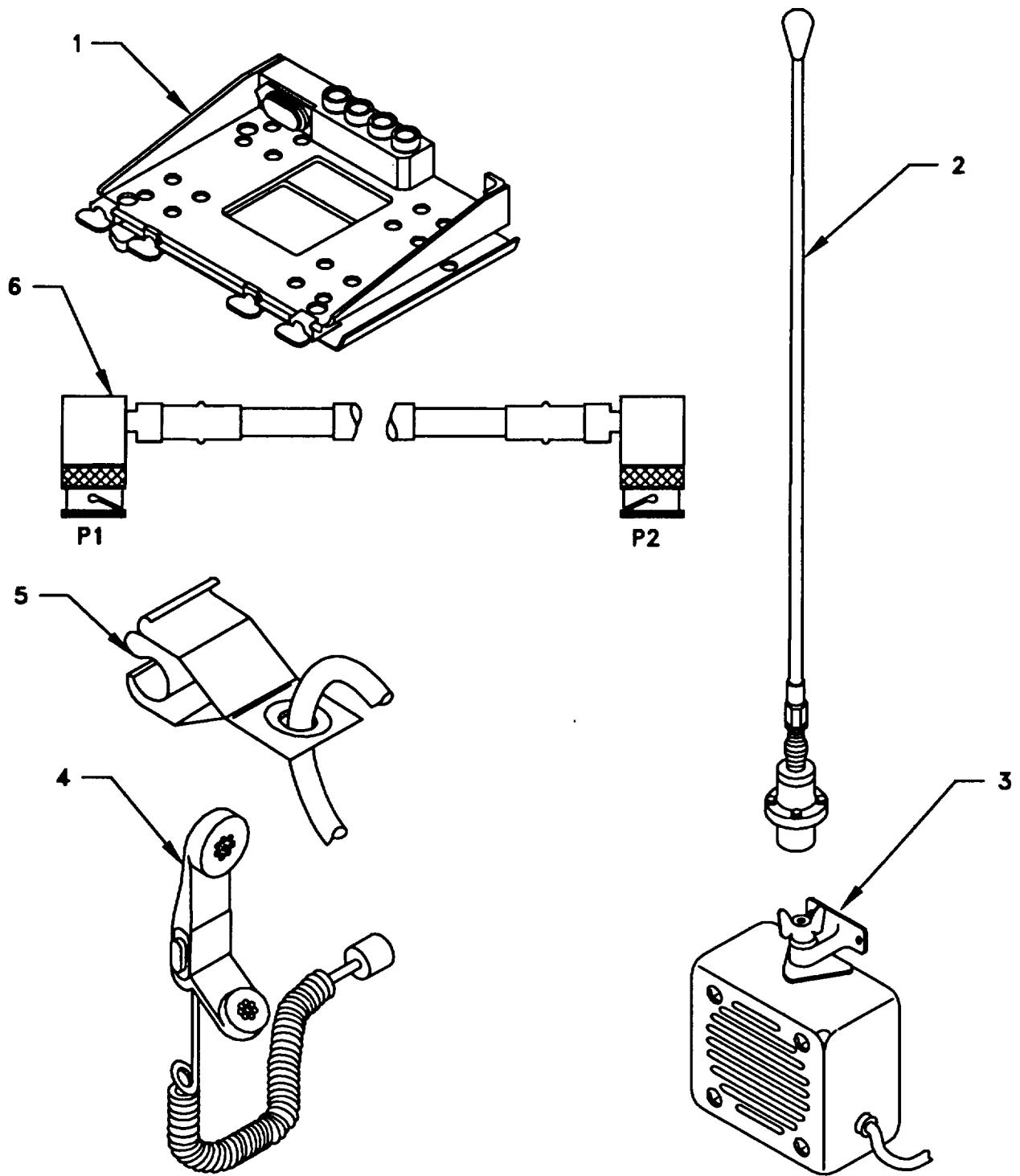


Figure 4-1. MK Illustrated Parts List



Table 4-2. Additional Items Required for Installation when using RT-1439NRC

NSN	ITEM DESCRIPTION AND PART NUMBER	QUANTITY IN MK	SMR CODE	FIGURE ITEM NO.
	Plate, Mounting (A3050676-1)	1	XBOZZA	4-2, 1
5995-01-222-4120	Cable Assembly, Special Purpose, Electrical CX-13293NRC (4 FT, 0 IN) (A3014034-1)	1	PAOZZA	4-2, 2
5995-01-226-5482	Cable Assembly, Power, Electrical CX-13303NRC (2 FT, 6 IN) (A3014040-5)	1	PAOZZA	4-2, 3
5305-00-984-7350	Screw, Machine, Flat-Head (5/16-24 x 1 in) MS35191-308	4	PAOZZA	

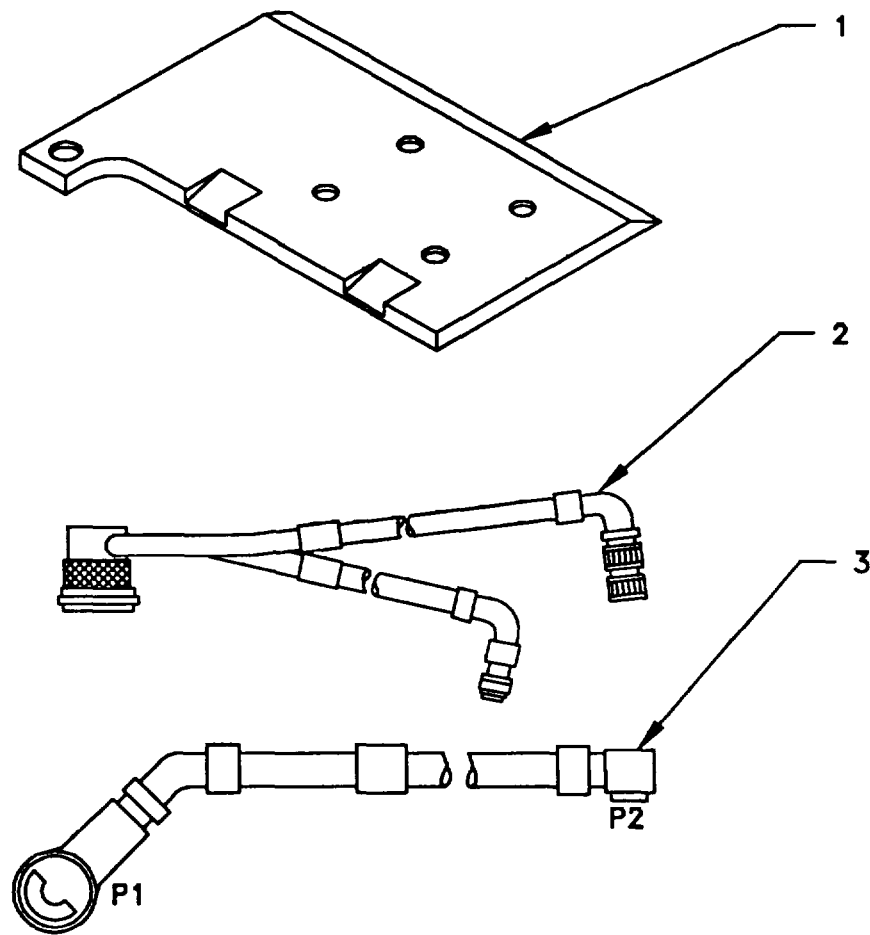


Figure 4-2. TSEC/KY-57 Illustrated Parts List

**4.3.3 Consumable Materials.** The table below lists materials required for installation but not supplied with MK.

NSN	NOMENCLATURE
8040-00-117-8510 6850-00-880-7616	Adhesive-Sealant, Clear, RTV Silicone Compound, MIL-S-8660

**4.4 Tools and Test, Measurement, and Diagnostic Equipment (TMDE) Required.** The following tools and TMDE are needed for installation.

NOMENCLATURE	NSN	QUANTITY
Radio Set*		1
Pocket Knife, Electrician's	5110-00-240-5943	1
Screwdriver, No. 2 Point Phillips, 4 in	5120-00-234-8913	1
Screwdriver, 1/4 in Flatblade, 4 in	5120-00-222-8852	1
Pliers, Round Nose	5120-00-240-6172	1
Pliers, Diagonal Cutting	5110-00-965-0974	1
Wrench, Open/Box 1/2 in 9/16 in	5120-00-228-9506	1
	5120-00-228-9507	1
Handle, Socket Wrench:	5120-00-240-5364	1
Socket: 1/2 in	5120-00-237-0977	1
9/16 in	5120-00-227-6704	1
Electric Drill	5130-00-889-8994	1
Drill Bit: 11/32 in	5133-00-227-9664	1

\*Use radio issued with your shelter if available.

5. INSTALLATION PROCEDURES.

This section describes where and how to install MK items in the shelter. See Figure 5-1 for an overall view of where the MK equipment, as well as radio components, will be installed. When installing MK equipment, be sure to read and follow instructions and illustrations carefully. If Radio Set ANNRC-87/88/90 is to be installed, communications security equipment (TSEC/KY-57) will also need to be installed. See Section 5.5 for information.

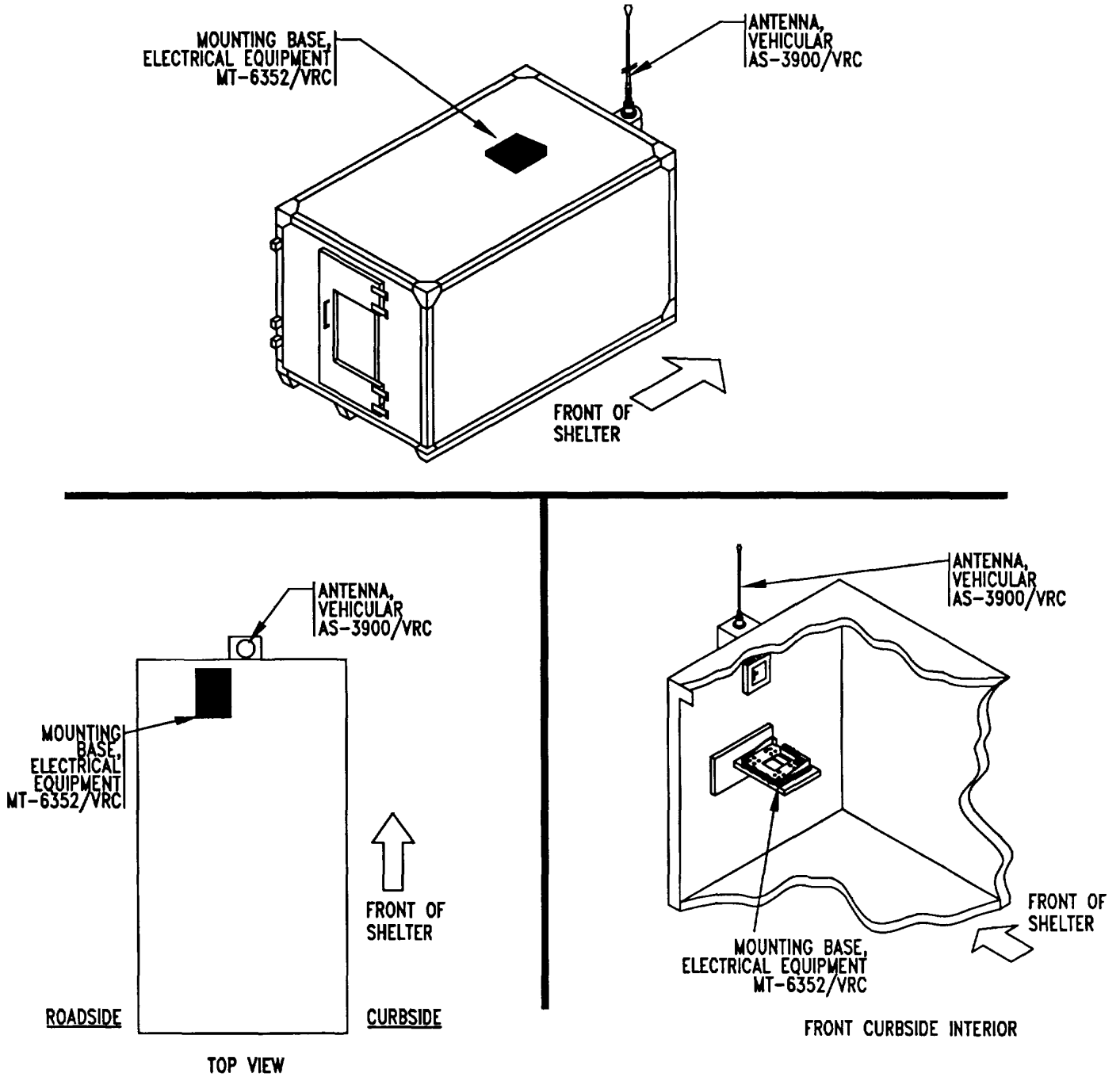


Figure 5-1(1). MK and Radio Installation: MK Equipment Locations, AN/TRC-138

5. INSTALLATION PROCEDURES. Continued.

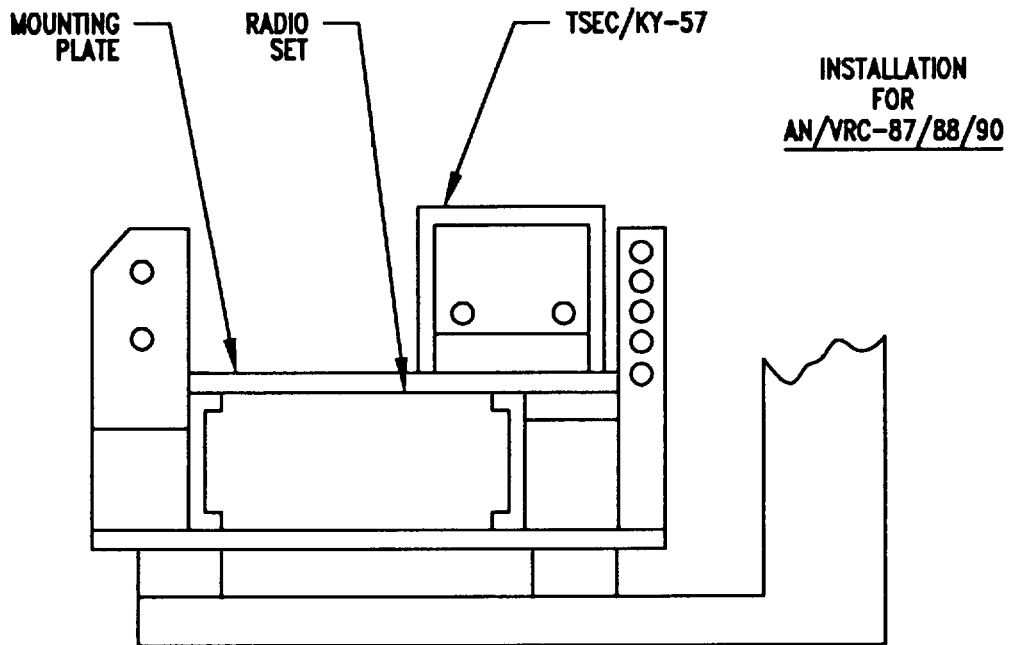
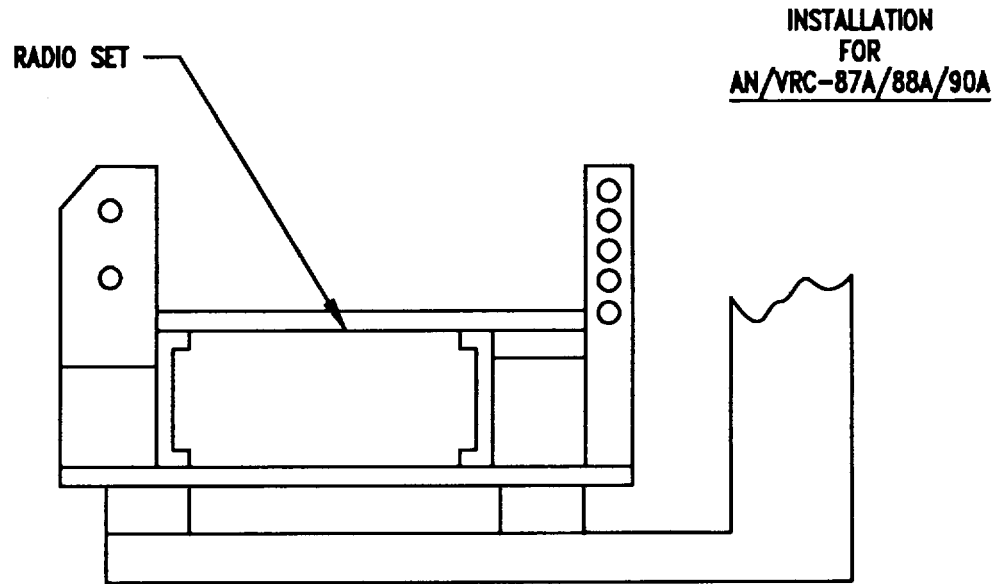


Figure 5-1(2). MK and Radio Installation: Radio Equipment Locations, AN/TRC-138

5. INSTALLATION PROCEDURES. Continued.

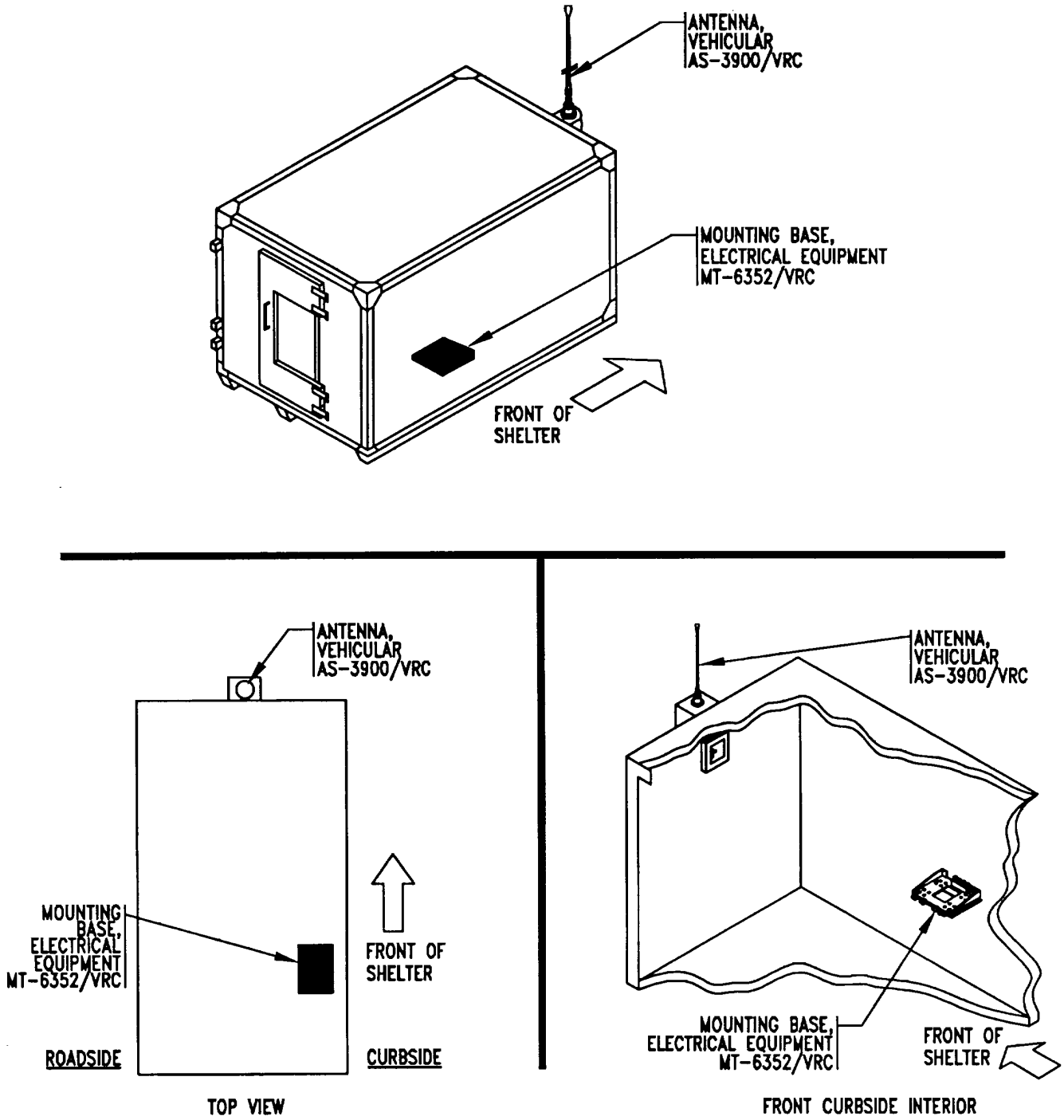
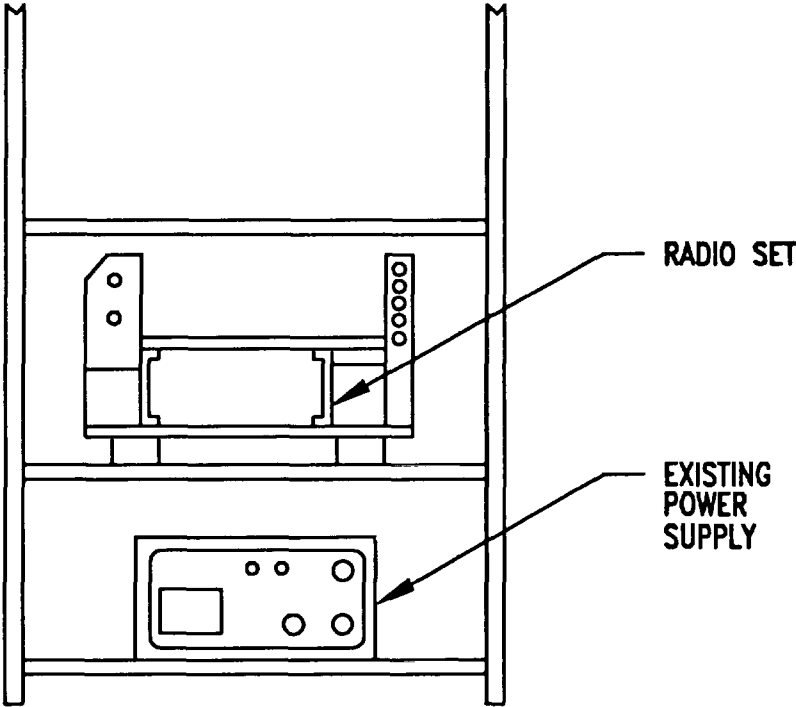


Figure 5-1(3). MK and Radio Installation: MK Equipment Locations, AN/TRC-138A

5. INSTALLATION PROCEDURES. Continued.

INSTALLATION  
FOR  
AN/VRC-87A/88A/90A



INSTALLATION  
FOR  
AN/VRC-87/88/90

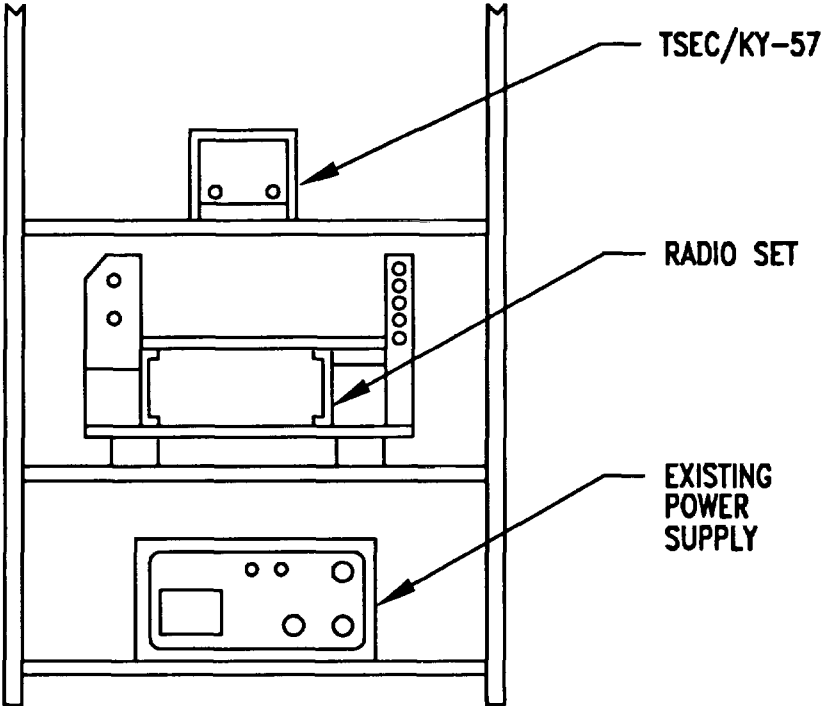


Figure 5-1(4). MK and Radio Installation: Radio Equipment Locations, AN/TRC-138A

**5.1 Installation of Antenna, Vehicular, AS-3900NRC (antenna).**

**5.1.1 Installation of Antenna Base.** Use the following procedures to install the antenna base in both the AN/TRC-138 and AN/TRC-138A.

ITEM	ACTION	REMARKS
------	--------	---------

**NOTE**

Apply a thin coat of adhesive-sealant to both sides of each internal /external-toothed (IET) washer during installation, and to the area of contact where IET washer is to be placed.

- |  |   |
|--|---|
| <p>a. RF cable (7) and lead, electrical (8).</p> | <p>From inside the shelter, feed the RF cable and lead, electrical through the antenna port up through the mounting hole in the existing antenna box assembly (6). See Figure 5-2(1).</p> |
| <p>b. Gasket (2)</p>                             | <p>Place on top of existing antenna box assembly (6) and align mounting holes.</p>  |

- 1. ANTENNA BASE
- 2. GASKET
- 3. CAP SCREW (3/8-16 X 1-3/4 IN)
- 4. WASHER, LOCK IET (3/8 IN)
- 5. NUT (3/8-16 IN)
- 6. ANTENNA BOX ASSEMBLY
- 7. RF CABLE, CG-3855/VRC
- 8. LEAD, ELECTRICAL (GROUND)

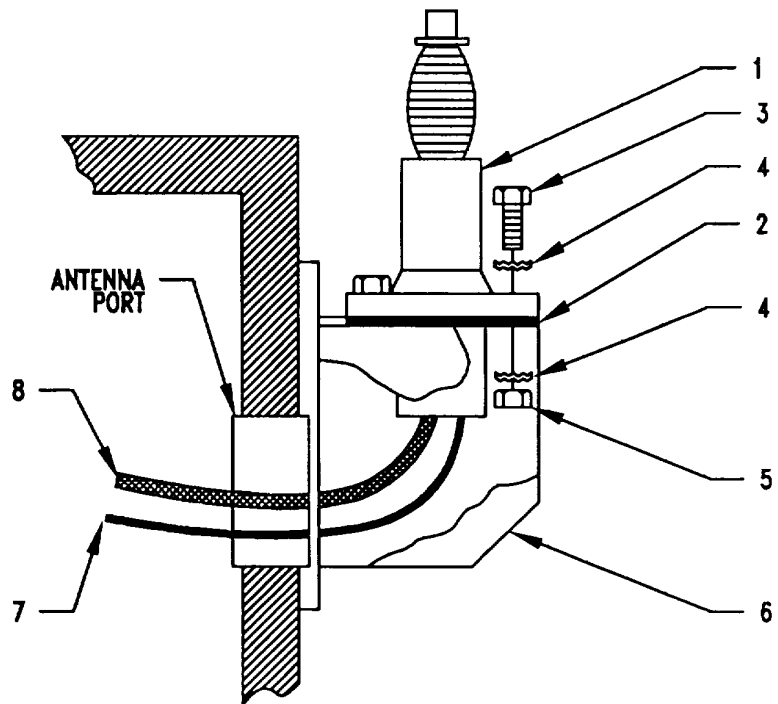


Figure 5-2(1). Antenna Base Installation

## 5.1.1 Installation of Antenna Base. Continued.

ITEM	ACTION	REMARKS
c. RF cable (7) and lead, electrical (8).	Remove ground strap attached to antenna base and replace with lead, electrical. Connect RF cable connector P1 to antenna base (1) connector J1. Tighten and secure.	Tools: Phillips screwdriver.
d. Antenna base (1)	Place on top of gasket (2) and existing antenna box assembly (6). Aline mounting holes. From inside shelter, pull in the RF cable and ground lead through the antenna port.	
e. Four cap screws (3), eight internal /external-toothed (IET) washers (4) and four nuts (5).	Install and secure. open/box wrench.	Tools: 9/16 in socket and 9/16 in

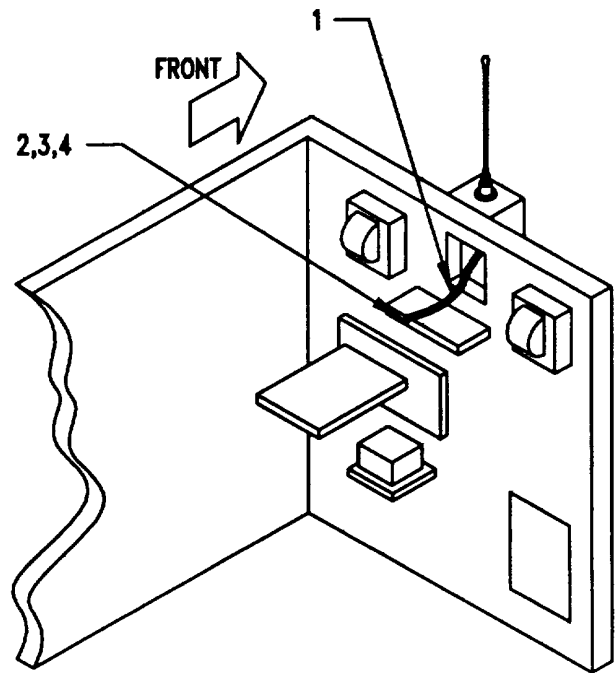
**NOTE**

Use the following procedures to make the antenna ground lead connections.

f. For AN/TRC-138: Lead, electrical (1), machine bolt (2), IET washer (3) and nut (4).	Drill one 11/32 in diameter hole in the front of the shelf under the antenna port. Secure lead, electrical with indicated hardware. See Figure 5-2(2).	Tools: Electric drill, 11/32 in drill bit, 1/2 in socket and 1/2 in open/box wrench.
g. For AN/TRC-138A: Lead, electrical (1) and IET washer (2).	Secure to location where previous ground was attached. See Figure 5-2(3).	



5.1.1 Installation of Antenna Base. Continued.



- 1. LEAD, ELECTRICAL
- 2. MACHINE BOLT (5/16-24 X 5/8 IN)
- 3. IET WASHER (5/16 IN)
- 4. NUT (5/16-24 IN)

Figure 5-2(2). Ground Lead Installation:  
AN/TRC-138

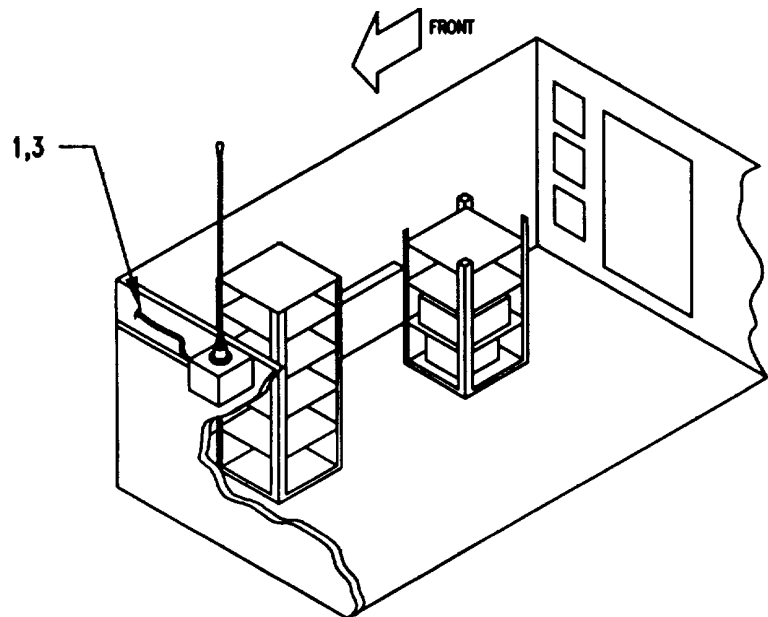
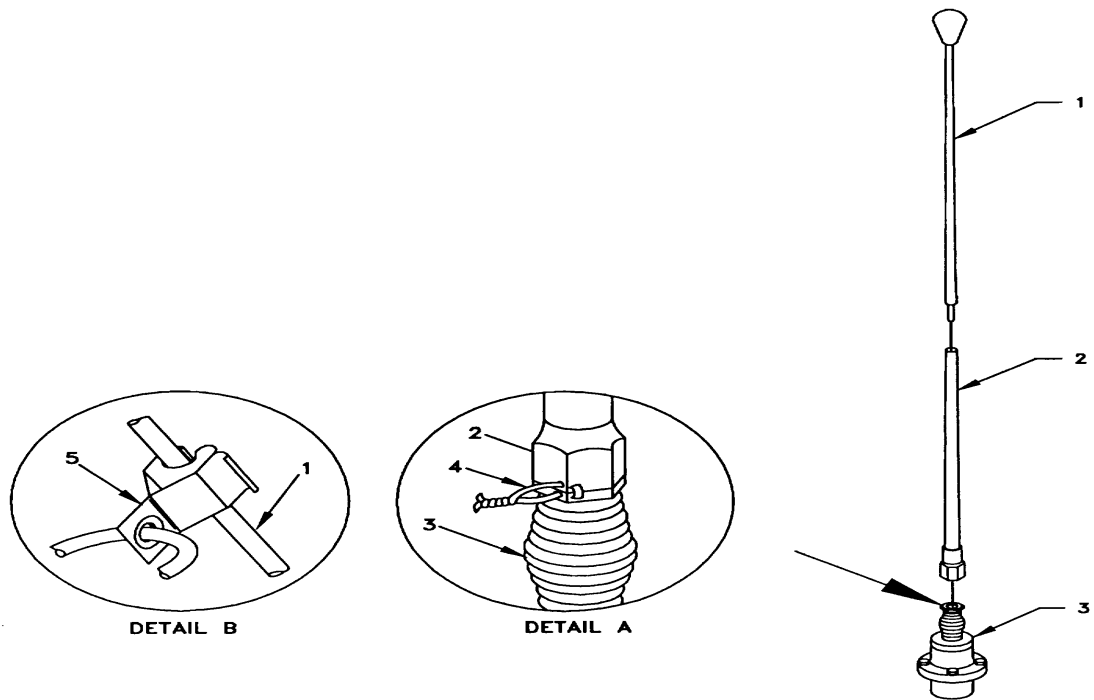


Figure 5-2(3). Ground Lead Installation:  
AN/TRC-138A

**5.1.2 Installation of Top Antenna Assembly.** The top portion of the antenna includes a lower element and an upper element (with installed cap). Use the following procedure to assemble, install and tiedown all antennas.

ITEM	ACTION	REMARKS
a Antenna elements (1,2)	Apply silicone compound to element threads and assemble 5-2(4).	See Figure
b Antenna element (2)	Install and hand-tighten to antenna base (3).	
c Lock wire (4)	Install to antenna element (2) and antenna base (3). See Figure 5-2(4), Detail A.	
d Fiber rope assembly (5)	Cut and remove excess with diagonal cutting pliers. Attach clip to antenna element (1). Tie rope to vehicle to position antenna in desired location	See Figure 5-2(4), Detail B.



- 1. ANTENNA ELEMENT (UPPER)
- 2. ANTENNA ELEMENT (LOWER)
- 3. ANTENNA BASE
- 4. LOCK WIRE
- 5. FIBER ROPE ASSEMBLY

Figure 5-2(4). Top Antenna Assembly Installation

**5.2 Installation of Mounting Base, Electrical Equipment MT-6352NRC.** Remove and retain attaching bag of 5/16 in mounting hardware for installation. To insure good electrical grounding, any rust, corrosion or paint around mounting holes in radio shelf should be removed before installing the mounting base. See Figure 5-3 and perform the following steps.

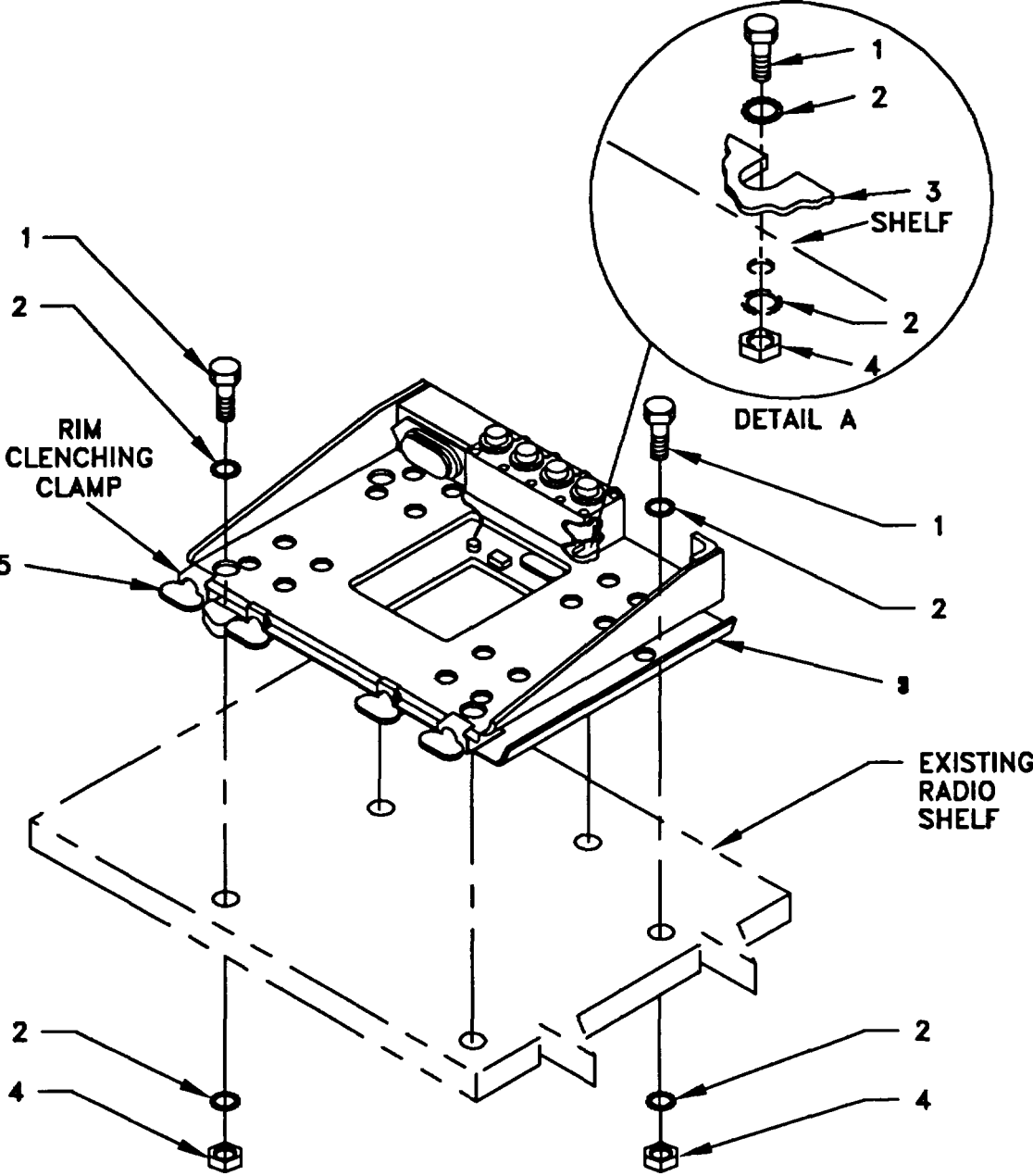
ITEM	ACTION	REMARKS
------	--------	---------

**NOTE**

Apply a thin coat of adhesive-sealant to both sides of each internal/ external-toothed (IET) washer during installation, and to the area of contact where IET washers are to be placed.

a	Mounting base (3)	Place on radio shelf over existing holes. See Figure 5-1(1) for the AN/TRC-138 and Figure 5-1(3) for the AN/TRC-138A.	
b	Two outer thumbscrews (5)	Turn ccw until both sets of threads have cleared center of holes. See Figure 5-3.	
c	Mounting base (3)	Aline four holes and rear slot with Matching hole pattern in shelf .If required, enlarge holes using an 11/32 inch drill bit.	Tools: Electric drill, 11/32 in drill bit.
d	Five machine bolts (1), ten internal /external-toothed (IET) washers (2) and five nuts (4).	Install and tighten to mounting base (3) and shelf	Tools: 1/2 in socket and 1/2 in open/box wrench.
e	Two outer thumbscrews (5).	Tighten and secure.	

5.2 Installation of Mounting Base, Electrical Equipment MT-6352NRC. Continued.



- 1. MACHINE BOLT (5/16-24 X 1 IN)
- 2. IET WASHER (5/16 IN)
- 3. MOUNTING BASE
- 4. NUT (5/16-24 IN)
- 5. THUMBSCREW

Figure 5-3. Mounting Base Installation

**5.3 Installation of Loudspeaker, Permanent Magnet LS-454/U (speaker).** Mounting location for speaker may be determined by the shelter commander. Typical methods used for mounting the speaker are as follows:

**Method A.** See Figure 5-4(1).

- a. Determine speaker (3) location.
- b. Drill  $13/32$  in diameter hole through mounting surface.
- c. Insert stud on speaker (3) through drilled hole; then secure with lockwasher (2) and wing nut (1).

1. WING NUT (P/O 3)
2. LOCK WASHER (P/O 3)
3. LS-454/U LOUDSPEAKER
4. CAP SCREW (1/4-20 X 1 IN)
5. SPEAKER BRACKET (P/O 3)
6. LOCK WASHER (1/4 IN)
7. NUT (1/4-20 IN)

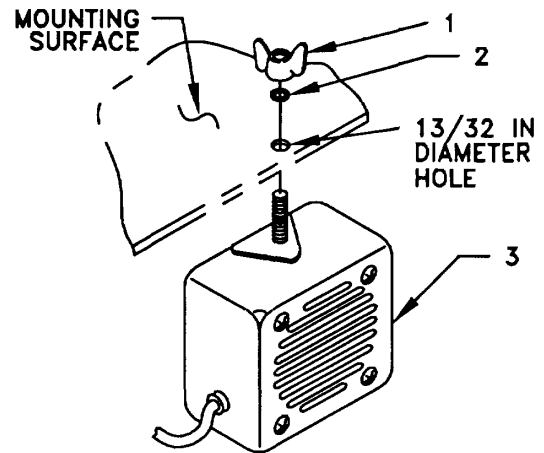


Figure 5-4(1). Speaker Installation - A

**Method B.** See Figure 5-4(2).

**NOTE**

Items (4), (6) and (7) are not supplied in kit.

- a. Determine speaker (3) location.
- b. Drill two  $5/16$  in diameter holes through mounting surface.
- c. Install and secure two cap screws (4), two lock washers (6) and two nuts (7) to speaker bracket (5) and mounting surface.
- d. Insert stud on speaker (3) through speaker bracket (5) hole; then secure with lock washer (2) and wing nut (1).

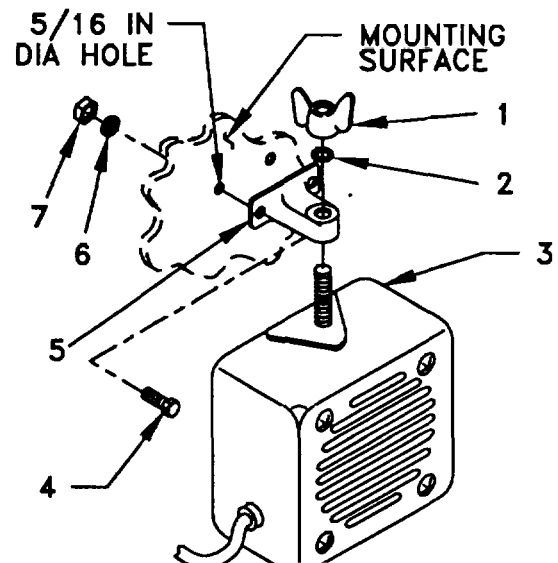


Figure 5-4(2). Speaker Installation - B

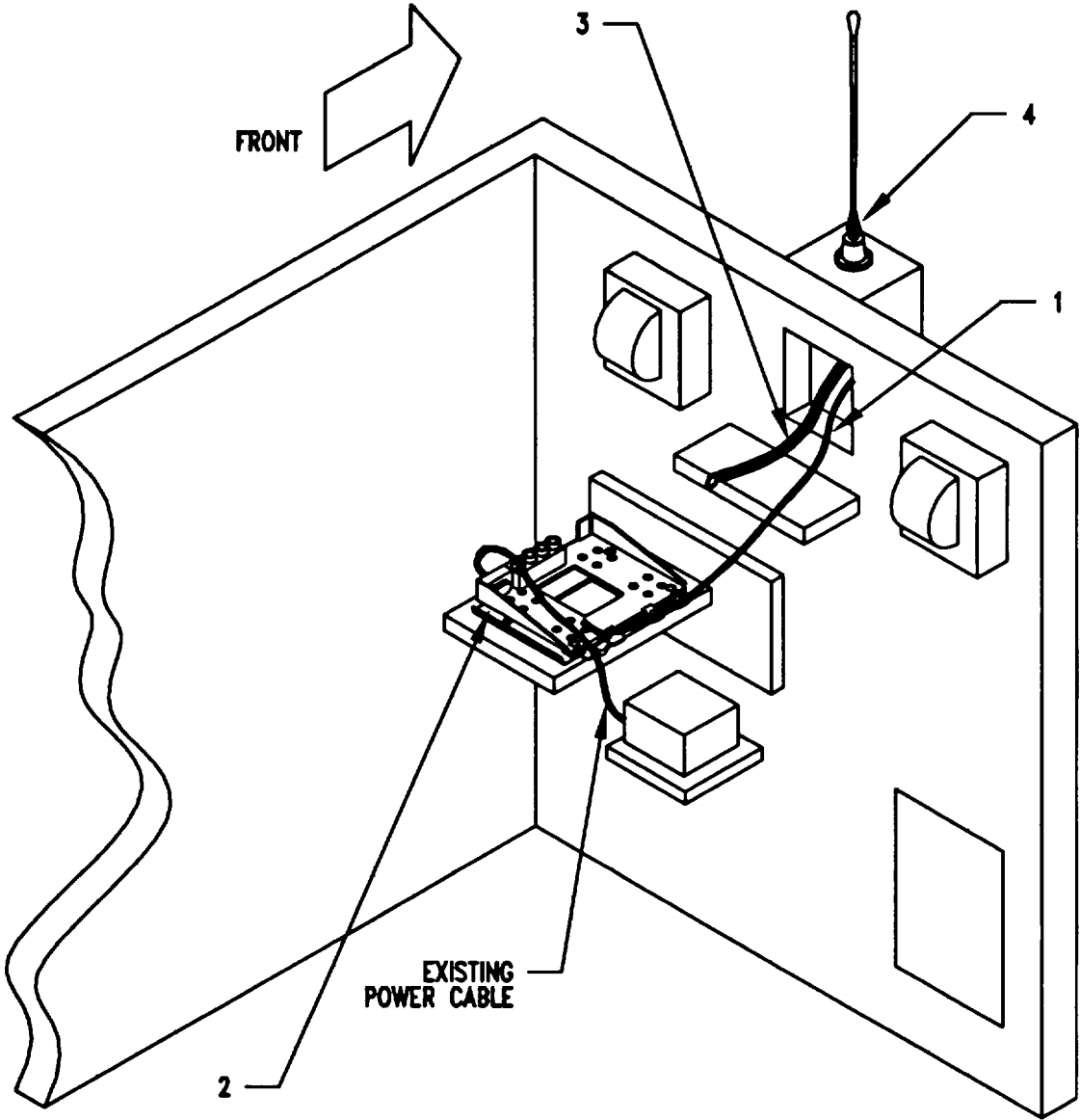
**5.4 Installation of Cables.** To accomplish the installation, leave tiedown straps (where used) loose enough to adjust cable slack and allow easy adjustment of equipment. When installation is complete, tighten and secure all tiedown straps.

**WARNING**

Make sure shelter power source is positioned OFF or disconnected before installing cables.

ITEM	ACTION	REMARKS
a For AN/TRC-138:RF cable (1) connector P2	Route from antenna port through shelter and position on left side of mounting base (2). See Figure 5-5(1).	
b Existing power cable connector P2	Connect and secure to mounting base (2) connector J1.	
c For AN/TRC-138A: RF cable (1) connector P2	Route along shelter wall, secure with tiedown straps (2) as required, and position on left side of mounting base (3). See Figure 5-5(2).	
d Existing power cable connector P2	Connect and secure to mounting base (3) connector J1.	

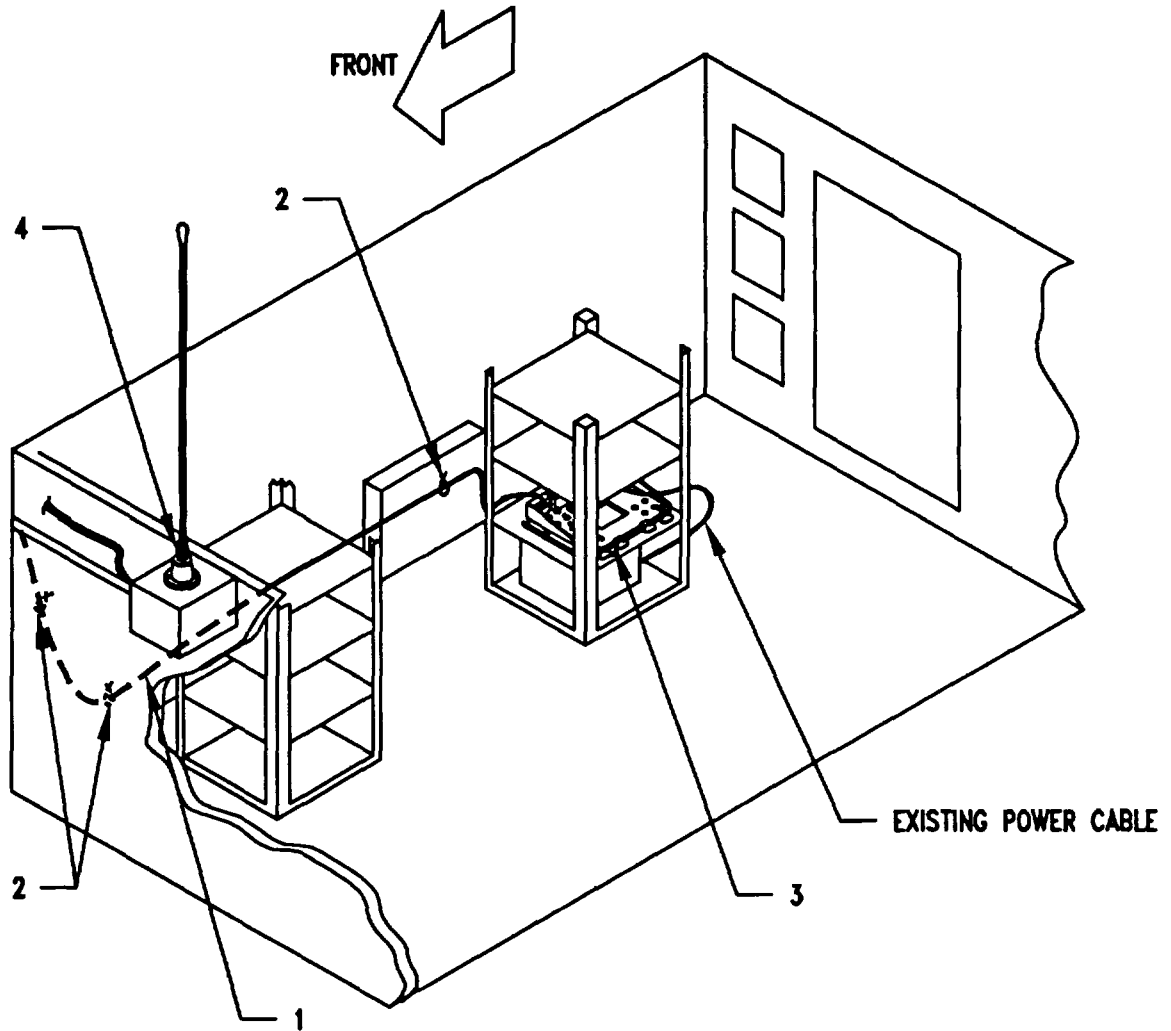
5.4 Installation of Cables. Continued.



- 1. RF CABLE CG-3855/VRC (20 FT, 0 IN)
- 2. MOUNTING BASE
- 3. LEAD, ELECTRICAL
- 4. ANTENNA BASE

Figure 5-5(1). Installation of Cables: AN/TRC-138

5.4 Installation of Cables. Continued.



- 1. RF CABLE, CG-3855/VRC (20 FT, 0 IN)
- 2. TIEDOWN STRAP
- 3. MOUNTING BASE
- 4. ANTENNA BASE

Figure 5-5(2). Installation of Cables: AN/TRC-138A

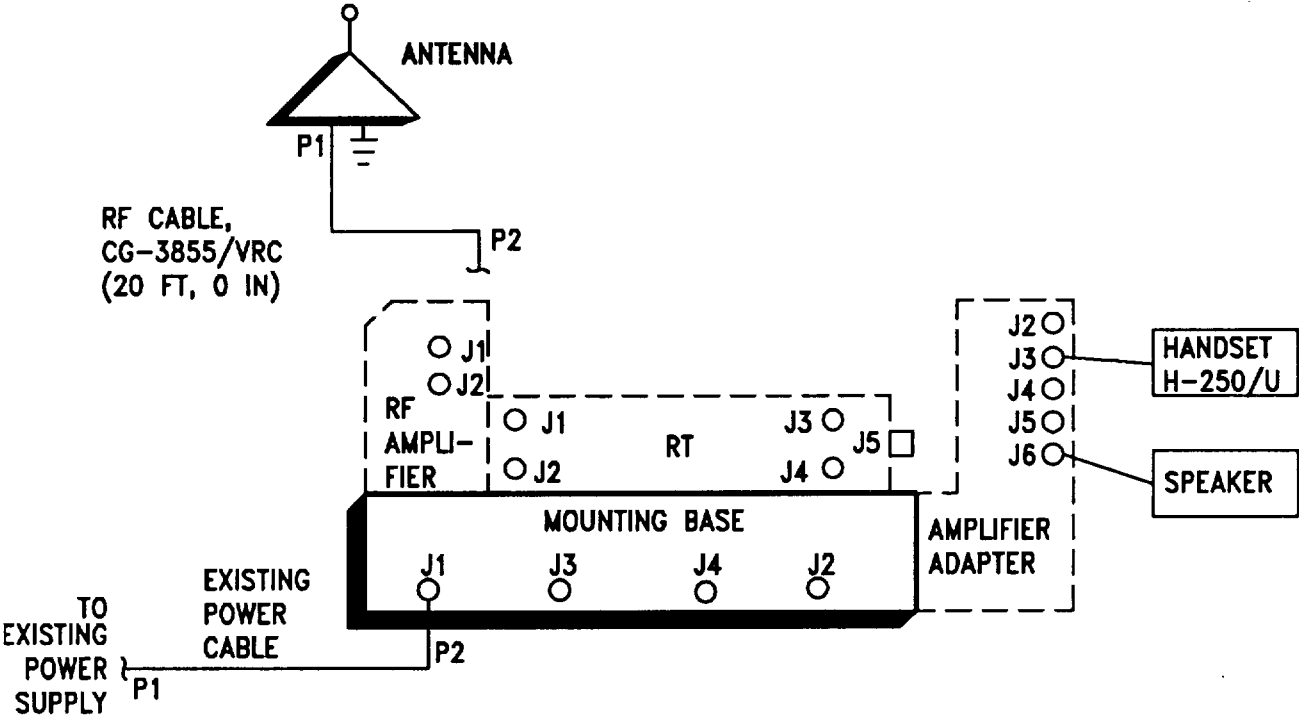


**5.5 Installation of MK-2499/VRC.** For Radio Set ANNRC-87/88/90, install MK-2499NRC (TSEC/KY-57 security equipment) in the location shown in Figure 5-1(2) and Figure 5-1(4). Refer to section 5.6 for connection of cables.

**5.6 Post-Installation and Checkout.** After equipment is installed and cables are connected, perform the following steps.

ITEM	ACTION	REMARKS
a Equipment	Check for secure mounting. Check for loose parts, connectors, and mounting hardware.	
b Cables	Check for proper installation and connection of cables. Unused cables should be stowed in appropriate place inside the shelter.	
c Protective covers	Insure that all installed cables are covered when not in use or connected.	
d Radio issued with shelter	Install and connect cables. See TM 11-5820-890-20-1 or TM 11-5820-890-20-4 for installation and operational (OP) checks and instructions.	

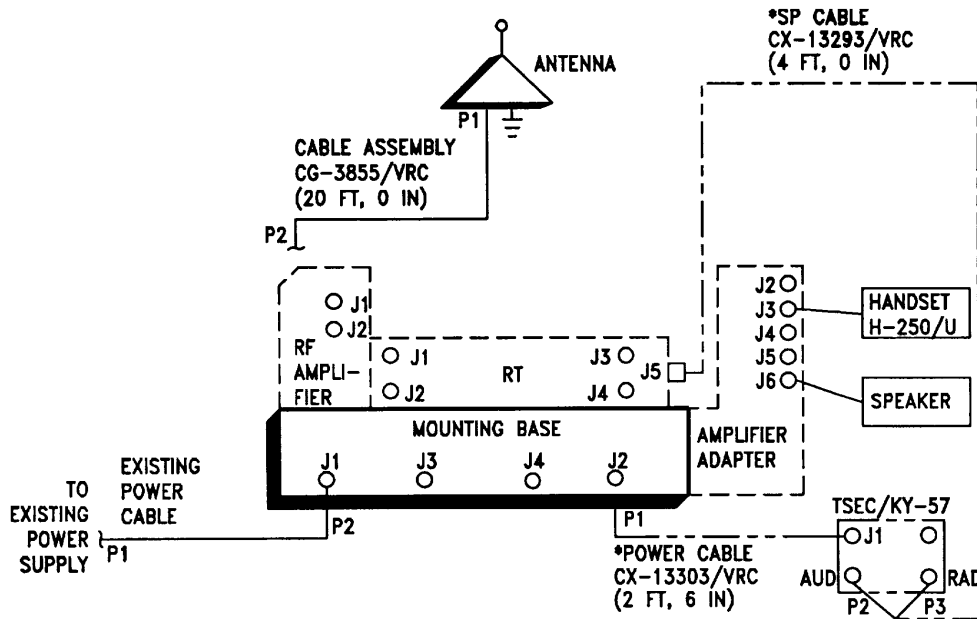
5.6 Post-Installation and Checkout. Continued.



CABLE ASSEMBLY	FROM			TO		
	CABLE CONN.	UNIT	UNIT CONN.	CABLE CONN.	UNIT	UNIT CONN.
CG-3855NRC (20 FT, 0 IN)	P2	RF amplifier or RT	J1	P1	Antenna base	J1
Existing Power Cable	P2	Mounting base	J1	P1	Existing power supply	
Speaker Cable		Amplifier adapter	J6		Speaker	
Handset Cable		Amplifier adapter	J3		Handset	

Figure 5-6(1). Cable Diagram: For ANNRC-87A/88A/90A

5.6 Post-installation and Checkout. Continued.



CABLE ASSEMBLY	FROM			TO		
	CABLE CONN.	UNIT	UNIT CONN.	CABLE CONN.	UNIT	UNIT CONN.
CG-3855NRC 20 FT, 0 IN)	P2	RF amplifier or RT	J1	P1	Antenna base	J1
Existing power	P2	Mounting base	J1	P1	Existing power cable supply	
Speaker Cable		Amplifier adapter	J6		Speaker	
Handset Cable		Amplifier adapter	J3		Handset	
*CX-13303NRC (2 FT, 6 IN)	P1	Mounting base	J2	P2	MT-6429NRC	J1
*CX-13293NRC (4 FT, 0 IN)	P1 P3	RT	J5	P2	TSEC/KY-57	AUD RAD

\* Not supplied in this MK.

Figure 5-6(2). Cable Diagram: For ANNRC-87/88/90

**APPENDIX A****REFERENCES**

---

AMDF	Army Master Data File (Microfiche)
AR 710-2	Supply Policy Below the Wholesale Level as Contained in Unit Supply UPDATE
AR 725-50	Requisitioning, Receipt and Issuing System in UPDATE
DA Pam 25-30	Consolidated Index of Army Publications (Microfiche)
DA Pam 710-2-1	Using Unit Supply System Manual Procedures as Contained in Unit Supply UPDATE
SB 11-131-2	Vehicular Radio Sets and Authorized Installations (SINCGARS)
TM 11-5820-890-10-1	Operator's Manual (ICOM Radio Sets)
TM 11-5820-890-10-3	Operator's Manual (Non-ICOM Radio Sets)
TM 11-5820-890-20-1	Unit Maintenance Manual (ICOM Radio Sets)
TM 11-5820-890-20-2	Unit Maintenance Manual (ICOM Radio Sets)
TM 11-5820-890-20-4	Unit Maintenance Manual (Non-ICOM Radio Sets)
TM 11-5820-890-20P	Repair Parts and Special Tools List

**A-1/(A-2 blank)**

By Order of the Secretary of the Army:

GORDON R. SULLIVAN  
General, United States Army  
Chief of Staff

Official:



MILTON H. HAMILTON  
Administrative Assistant to the  
Secretary of the Army  
06488

DISTRIBUTION:

To be distributed in accordance with DA Form 12-36-E, block 9675  
requirements for TB 11-5820-890-20-43.

\*U.S. GOVERNMENT PRINTING OFFICE: 194 - 510-106/00205

RECOMMENDED CHANGES TO EQUIPMENT TECHNICAL PUBLICATIONS



THEN... JOT DOWN THE DOPE ABOUT IT ON THIS FORM, CAREFULLY TEAR IT OUT, FOLD IT AND DROP IT IN THE MAIL!

**SOMETHING WRONG WITH THIS PUBLICATION?**

FROM: (PRINT YOUR UNIT'S COMPLETE ADDRESS)

DATE SENT

PUBLICATION NUMBER

PUBLICATION DATE

PUBLICATION TITLE

BE EXACT... PIN-POINT WHERE IT IS

PAGE NO.

PARA-GRAPH

FIGURE NO.

TABLE NO.

IN THIS SPACE TELL WHAT IS WRONG AND WHAT SHOULD BE DONE ABOUT IT:

TEAR ALONG PERFORATED LINE

PRINTED NAME, GRADE OR TITLE, AND TELEPHONE NUMBER

SIGN HERE:

DA FORM 2028-2  
1 JUL 79

PREVIOUS EDITIONS ARE OBSOLETE.

P.S.—IF YOUR OUTFIT WANTS TO KNOW ABOUT YOUR RECOMMENDATION MAKE A CARBON COPY OF THIS AND GIVE IT TO YOUR HEADQUARTERS.

